

Troubleshooting Guide for AVRISP-U USB Drivers

Normally, the USB drivers should install silently. Windows 2000, Windows XP and Windows Vista should all behave the same way, as this product includes a Windows signed and Verified driver.

Silent install means that a small Dialog appears at the bottom right of the screen, says "Found New Hardware" and then installs the drivers, without calling the Driver Install Wizard.

Occasionally, this procedure may fail, which may be due to your actual Windows installation. Windows becomes convinced that this USB device is a **USB Composite Device** or sometimes two **Dual RS232 Devices** rather than a **USB Serial Converter**. If it does you will need to follow this procedure to install the drivers manually.

Please note that this is a guide only as different Windows installations can behave differently. This may be due to different service packs or similar differences between installations. This applies to all Windows OS, including XP and Vista. *This is not a Vista only Problem.*

1. Plug in Programmer
2. Go to **Control Panel > System > Hardware** and Click **Device Manager** button
3. Open **USB Controllers** section. In bad installations, there will be a USB Composite Device rather than a USB Serial Converter.
4. Right click on the **USB Composite Device** and choose **Update Driver**

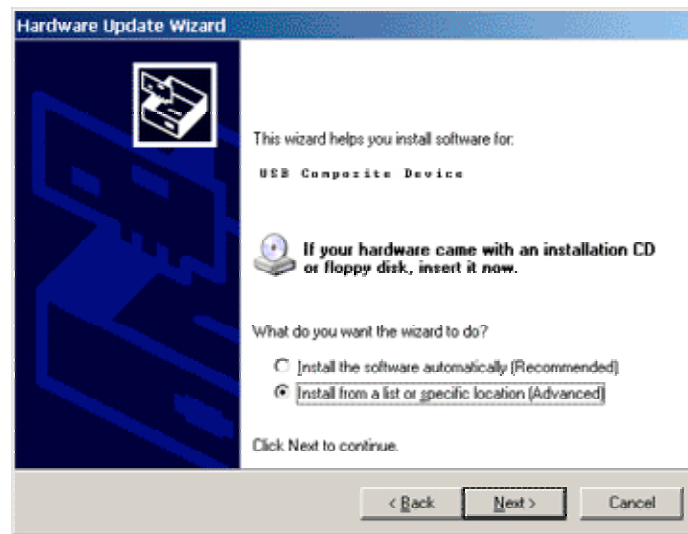
Notes

1. If there is no **USB Composite Device** under USB section, then there will be two unknown devices either in root or Ports section, usually called **Dual RS232** devices. In this case, this procedure will need to be carried out on both of these unknown devices
2. The correct device type is a **USB Serial Converter**
3. There are two drivers
 - **FTDIPORT.INF** for Dual RS232 devices
 - **FTDIBUS.INF** is for USB composite Device – choose this as this will install all drivers

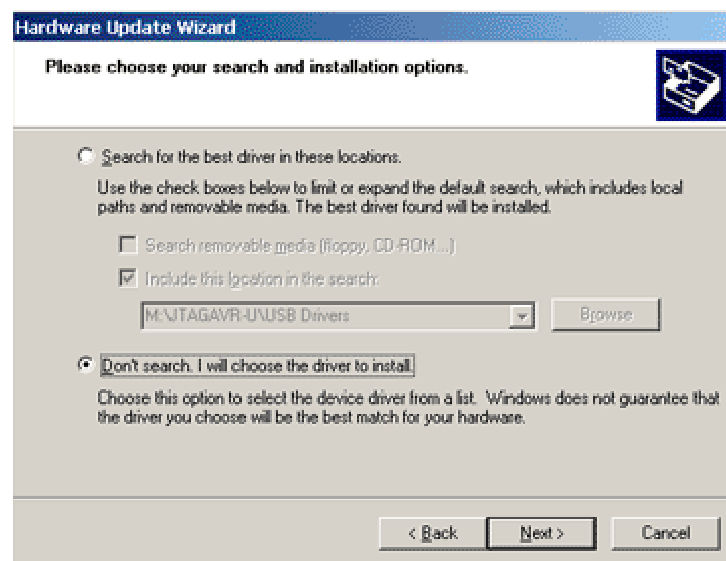
This will launch Driver Wizard. On the first page, select **No, not at this time** to prevent Windows searching the Internet



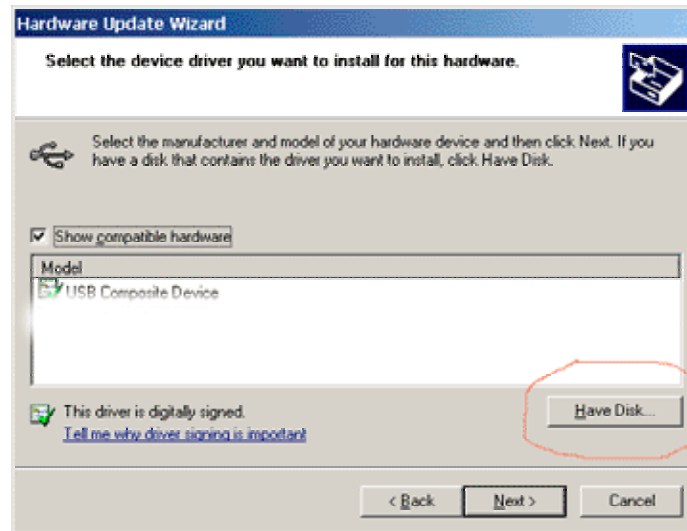
Click Next button and on second screen choose “**Install from a list or specific location**”



Click Next button, and on following screen select “**Don’t search. I will select driver to install**”



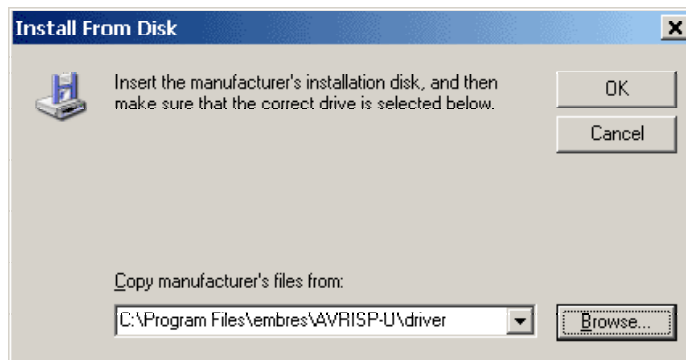
Click Next button. On next screen Click **Have Disk** Button



The following Dialog appears, for you to enter the path to the drivers.

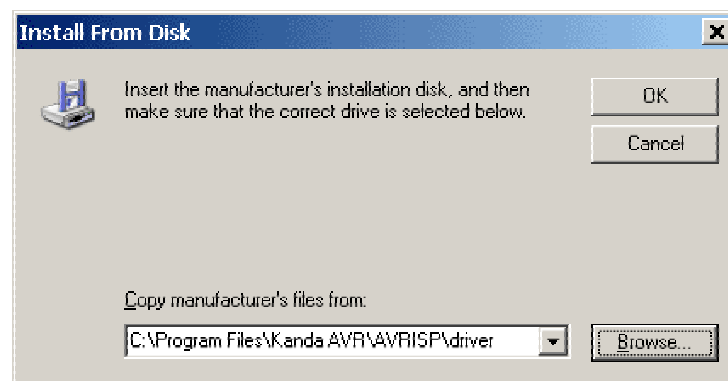
The drivers folder is different for Starter Kits and for AVRISP-U

AVRISP-U – Default folder is C:\Program Files\embres\AVRISP-U\driver



STK200, STK200ICE, STK300, STK300ICE, AVR-TRAIN

Default folder is C:\Program Files\Kanda AVR\AVRISP\driver



Click OK button

Very Important Note

Windows may complain that this driver is not the correct type for this device or give you a choice of drivers.

The correct device type is a **USB Serial Converter**.

There are two drivers.

- FTDIPORT.INF is the driver for individual Dual RS232 devices
- FTDIBUS.INF is the driver for USB Composite Device

Choosing FTDIBUS.INF will install both the individual Port drivers

It will now install driver when you click Next button

Your programmer should now be properly installed and ready for use.